



DREAM HEAT™

INFRARED INTELLIGENT HEATING SYSTEMS





Dream Heat floor heating
The heating technology of the 21st century

 **DREAM HEAT**™

iR

INFRA RED

The principle of Dream Heat sheet operation is INFRA RED heating.

The infra-red heats the surfaces directly adjacent to the sheet and then they emit the heat to the surroundings. The whole process reduces the heating time and energy consumption in comparison to classical heating which makes it a much cheaper solution in future operation.

Layered structure

The Dream Heat is a heating mat created by combining carbon fiber and carbon paste. Additionally, the mate is coated with two laminate layers so there are 11 layers in total. The product is very thin (only 0.7 mm) in comparison to classical floor heating.

PHYSICAL PARAMETERS Dh No1 & DH No2

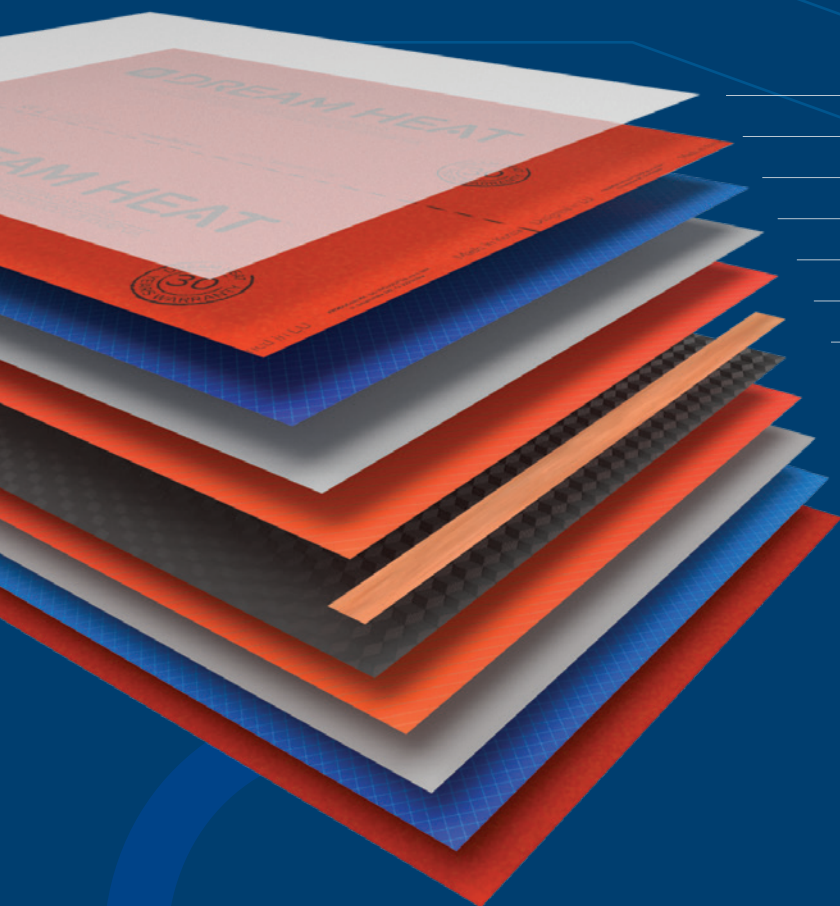
Foil thickness	0,7mm
Width	100cm
Length of roll	50m
Weight of roll	38kg
Number of layers	11

PHYSICAL PARAMETERS Dh No1

Voltage	230V
Maximum power 1m ²	240W
Power tolerance	240W±10%
Minimum part to be cut	50x20cm
Place of montage	floor
Maximum heating temperature	50°C
Usage temperature	0-50°C
External temperature probe	0-35°C
Efficiency	100%±1 %

PHYSICAL PARAMETERS Dh No2

Voltage	230V
Maximum power 1m ²	400W
Power tolerance	400W±10%
Minimum part to be cut	33x20cm
Place of montage	ceiling, wall
Maximum heating temperature	50°C
Usage temperature	0-50°C
External temperature probe	0-35°C
Efficiency	100%±1 %



Upper protective layer

PET: Outer coating of hardened film

PE: Second polyethylene insulation layer

Nonwoven fabric

PE: The first polyethylene insulation layer

Copper plate

Carbon: Heating element

PE: The first polyethylene insulation layer

Nonwoven fabric

PE: Second polyethylene insulation layer

PET: Outer coating of hardened film

The **Dream Heat** sheet serves for heating walls, floors and ceilings which then heat the air in the room. In this way the air temperature is constant, the air does not spin and raise dust.





The whole process is supported by smart solutions
Dream Connect Wi-Fi
mobile applications enable monitoring and control of energy consumption from anywhere.



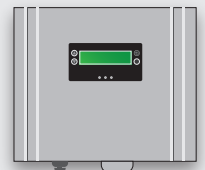
The fully integrated **Dream Sun** heating system is intended to power the **Dream Heat** heating sheet with energy coming from a photovoltaic installation which allows to use free solar energy regardless the increasing price of electric energy.

The cost of photovoltaic panels can be compared to the cost of a boiler-room which results with a costless and maintenance-free house heating. The installation investor benefits from the use of Dream Sun system immediately after it is first launched.

The Dream Heat sheets can be also applied in existing buildings.



PHOTOVOLTAIC COLLECTORS



INVERTER



THERMOSTAT

DREAM HEAT SYSTEM

DREAM HEAT

The **Dream Sun** photovoltaic system is environment friendly - it helps keep clean climate, fresh air and prevents smog and therefore contributes to users' good health. The IR heating is considered to be one of the healthiest.

This product is a perfect alternative to solid fuel stoves in old buildings which while burning different kinds of fuel pollute the atmosphere and have a great influence on the quality of air that we breathe in. Its additional advantages are the way and ease of installation.

Based on solar energy, the **Dream Sun** perfectly fits in with the EU strategy for sustainable development and renewable energy sources making our environment cleaner and healthier and it also restricts the reckless use of our planet's resources.



A significant advantage of the Dream Heat sheet is the simplicity of individual installation by the customer - the instruction assumes one working day to install Dream Heat in a 150 sq m house. The sheet is supplied in rolls of required length and 100cm width with cutting possibility every 20cm which is an additional advantage

The Dream Heat heating sheets can be also widely used with special protective mats in agriculture and farming to heat facilities (barns) and greenhouses (to encourage plant growth in autumn and winter periods).

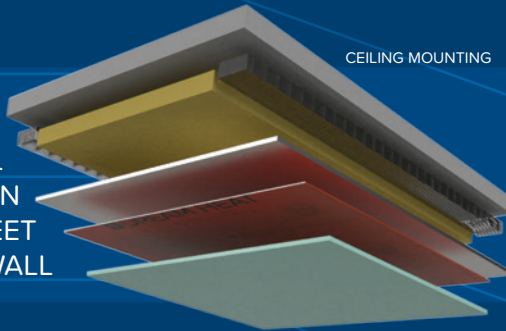


Versatility of use

The **Dream Heat** sheets can be installed on the floor, walls and ceiling. In residential and utility buildings.

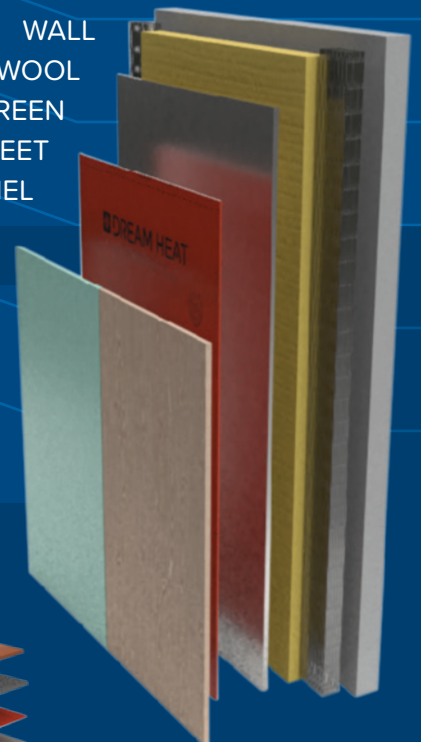
CEILING MOUNTING

CEILING
FRAME AND MINERAL WOOL
ALUMINIUM SCREEN
DREAM HEAT SHEET
DRYWALL



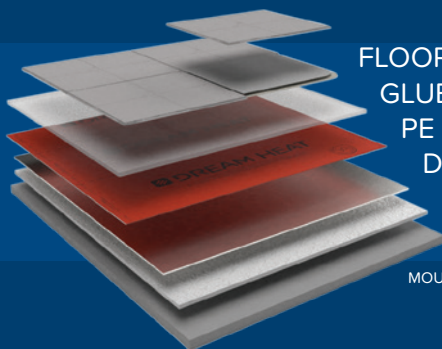
MUNTING ON THE WALL

WALL
FRAME AND MINERAL WOOL
ALUMINIUM SCREEN
DREAM HEAT SHEET
DRYWALL / WALL PANEL



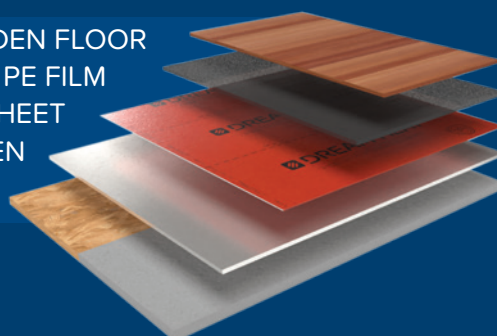
FLOOR TILES
GLUE AND SCREED
PE FILM
DREAM HEAT SHEET
ALUMINIUM SCREEN
SURFACE

MOUNTING UNDER FLOOR TILES



WOODEN FLOOR
PE FILM
DREAM HEAT SHEET
ALUMINIUM SCREEN
CONCRETE/WOOD SURFACE

MUNTING UNDER WOODEN FLOOR



STARTER PACK Dream Heat sheet + accessories

We want every installer to be equipped with the best necessary tools. That is why we have prepared a full range of accessories that will guarantee a fast and professional assembly of DREAM HEAT sheet.

Electric Heating film



Dream Heat DH NR-1 240W/m²

Art. no. - BUD0050

1 Box - 50m² (roll 1mx50m)

Electric Heating film for ceiling



Dream Heat DH NR-2 400W/m²

Art. no. - BUD0065

1 Box - 50m² (roll 1mx50m)

Temperature controller



Black or white color

Art. no. -BUD0051 NJ-3000 white

Art. no. -BUD0054 NJ-3000 black

Art. no. -BUD0052 NJ-6000 white

Art. no. -BUD0053 NJ-6000 black

Aluminium shield



Aluminium roll 25m x 1,25 x 4cm

Art. no. - BUD0058

300m² on palette (10 rolls)

Top layer insulation foil for electric film



Isolution foil 4m x 25m x 0,3mm

Art. no. - BUD0059

24 rolls on palette

Adhesive tape Dream Heat



DH Sheet mounting tape

Art. no. - BUD0057

36 pcs in box

Electrical insulation tape



Insulation tape 33m x 5cm

Art. no. - BUD0063

18pcs in box

Butyl tape for insulation connectors

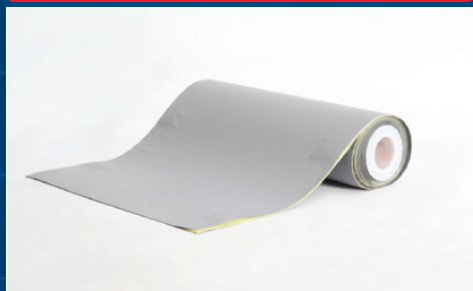


Butyl tape 14m x 5cm x 2mm

Art. no. - BUD0062

5pcs in box

Electric heating film dedicated for wet surfaces



Heating mat dedicated for wet surfaces

Art. no. -BUD0066 DH-W 0,5

Art. no. -BUD0067 DH-W 1

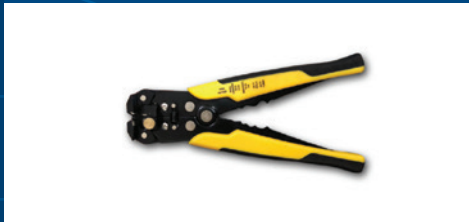
Art. no. -BUD0068 DH-W 1,5

Art. no. -BUD0069 DH-W 3

Art. no. -BUD0070 DH-W 3,5

Art. no. -BUD0071 DH-W 4

Wire cutter and crimping press



Crimping press DH-WC 1

Art. no. - BUD0071

Crimping press DH-CP 1

Art. no. - BUD0056

Connectors for heating film power wire



Copper connectors x100pcs (pack)

Art. no. - BUD0055

Power wire in double shield 2.5mm



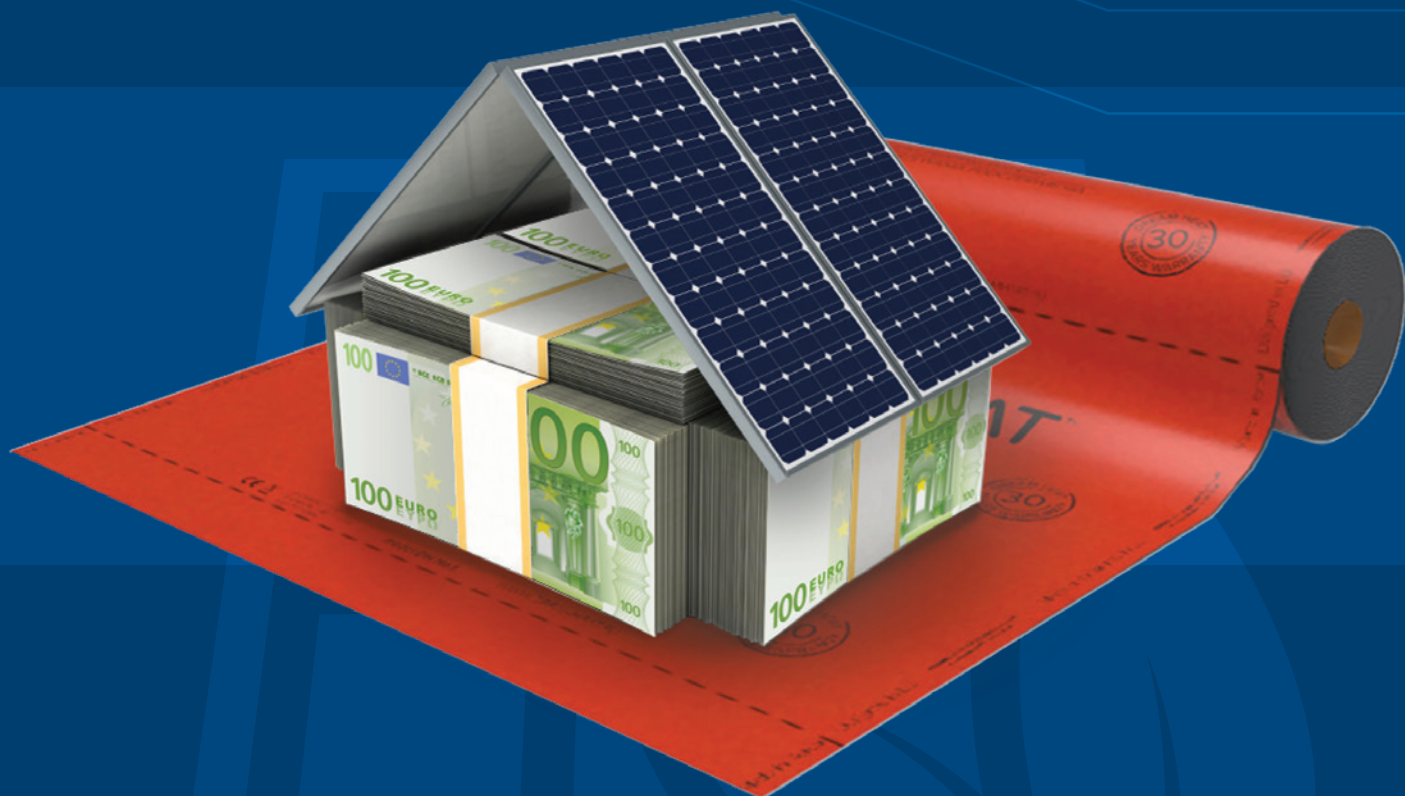
Double isolation wire 2.5mm x 100m roll

Art. no. - BUD0060



Reliable, efficient heating for years.

The use of laminates resistant to thermoshrinkability in the product allows 30 years warranty period.



 **DREAM HEAT**™ **START SAVE - STOP SMOG**



We are searching for distributors and installers. Contact us for more info.

www.dreamheat.eu

Support our idea and contribute to environmental protection by using clean energy.

Dream Heat distributor